



nio

DIGITAL TRANSFORMATION
INSIGHTS

Buyers Guide **Manufacturing Solutions**

July 2022 | www.niodigital.co

Foreword

Thank you for downloading this report, which will help you better understand the various product offerings and key features from the leading vendors in the digital transformation space.

I have spent my entire career working with software known as ERP (Enterprise Resource Planning), CRM (Customer Relationship Management), SCM (Supply Chain Management), HRM (Human Resources Management) and MRP2 (Manufacturing Resource Planning) from brands such as Oracle, SAP and Microsoft. These business applications form the transactional and information backbone of all large companies worldwide, and are widely accepted to be a prerequisite to embarking on Digital Transformation.

These systems not only cost millions of dollars to implement, but need teams of highly skilled professionals to maintain and expensive annual upgrades. Therefore they have only been accessible to very large companies.

Due to advances in the world of open source and cloud technology, such systems are now available to a wider audience at a fraction of the cost. Instead of millions, the investment is in the tens or hundreds of thousands of TT dollars.

Odoo Inc. is a pioneer of this business model, and their product, aptly called “Odoo”, is the main component of our business plan - it's going to help us to achieve our mission to create a Digital Economy here in Trinidad and Tobago.

Of course, we all know that installing software is no magic bullet, to achieve Digital Transformation you will need the skills, capabilities and experiences of a partner. In my opinion, the right Odoo digital transformation vendor/partner:

- Provides experienced Digital Transformation Consulting support: A CIO service - a group of experienced professionals with access to a global network is vital to your company making the right strategic decisions. This will provide you with the best possible insights and direction for success in the future.
- Provides tailored staff training on an ongoing basis: One of the most important factors for success is educating your entire team - from the owner to the driver and everyone in between will need individualized intraining, with on-going support to help them navigate the changes digital transformation will herald.
- Has a full-time Odoo/Python development team: As Odoo is Open Source Software, managing it requires good technical knowledge at the source code level. Almost all projects require some degree of customization, and you will not realize the full value of Odoo without this development support. One-two developers aren't enough, a stable team complete with Business Analysts, Designers, Developers and Testers is needed.
- Provides 24/7 Support and Maintenance: You may not think that you need this now, but with accelerated technology, business today is 24/7 - consider remote working, online portals and many other customer, supplier and employee touch points.

Please keep these points in mind as you search for your Digital Transformation partner. In the next few pages, you will find additional information, which I hope will help you.

Lorcan Camps

Founder & CEO

July, 2022

About Nio

Our Mission

“To help create and sustain a Digital Economy within Trinidad & Tobago.”

To achieve this, we offer a Digital Business Platform comprising best-in-class open source software along with:

- **Digital Economy Accelerators** - Odoo Cloud ERP + industry solution accelerators to completely digitalize businesses.
- **Digital Transformation Services** - consulting, onboarding, mentoring, education & 24/7 support services to help companies along in their digitalization journey.
- **Digital Training Academy** - upskilling of professionals to operate a Digital Business Platform to improve business performance.
- **Digital Jobs** - creation of new roles to leverage the Digital Business Platform to increase revenues, reduce costs and improve service delivery.
- **Digital Business Network** - connect to a global digital ecosystem for mutual benefits.

Nio Digital achieves Odoo Gold Partner status

[Port of Spain, Trinidad & Tobago. 1 April 2022]

Odoo Inc., a leading provider of all-in-one open source business software for companies worldwide has named Nio Digital Limited as its latest Gold Partner.

The award recognizes technical excellence and commitment to helping businesses succeed in their Digital Transformation journey. With over 3,500+ partners globally, Nio is now amongst the top 7.5% of partners globally, and the only Gold Partner in Trinidad and Tobago.

“Nio is the most experienced partner that we have in Trinidad & Tobago. Their focus and understanding of our clients’ problems and their track record of delivering high quality service is outstanding.”

Alejandra Vela,

Senior Account Manager for Latin America at Odoo Inc

About Odoo

Fits small and large companies alike

Odoo's mission is to provide a range of easy to use business applications that form a complete suite of tools to accompany any business need. Odoo gives millions of companies easy access to the software they need to run and expand their business.

Odoo has developed 30 key business applications which are regularly upgraded. In addition, a community of more than 1500 active members, has contributed another 16,000+ apps to cover a wide variety of business needs.

Odoo is the most installed business software in the world (source: Odoo.com). It is used by over 7,000,000 users worldwide ranging from startup companies (1 user) to large enterprises (300,000+ users).

What makes Odoo different?

A smooth and friendly user experience built to ensure fast and seamless adoption.

Fluidity, full integration and customisation, meet the needs of even the most complex companies.

Odoo's flexibility means that apps can be added according to the growth of your company, adding one app at a time as your needs evolve and your customer base grows.

Thanks to the open source community, Odoo is actively maintained by a large base of developers to meet evolving customer needs and provide new, innovative applications.

Odoo is positioned to disrupt the Market

With a unique value proposition

Odoo provides everything a business needs to operate with a top-notch user experience.

- **CRM** apps for, Digital Marketing, Sales, Website, eCommerce, POS, Field Services and Helpdesk.
- **HRM** apps for Employees, Performance, Recruitment, Absence Management, Payroll & Productivity.
- **ERP** apps for Accounting, Purchasing, Inventory, Products, Service, Projects, Manufacturing and Warehousing.

Odoo apps work together seamlessly, giving you the ability to automate and track everything you do, centralized, online, and accessible from anywhere with any device.

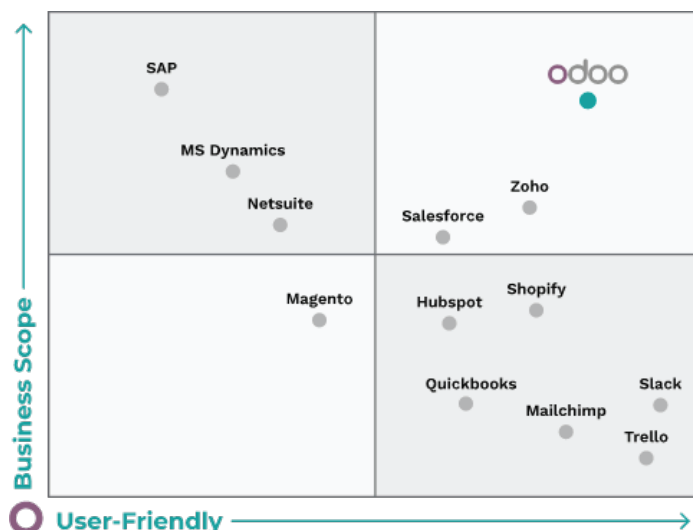
The open-source development model has allowed us to leverage thousands of developers and business experts to build the world's largest ecosystem of fully integrated business apps - all at the lowest possible cost.

With a modern and elegant technical design, Odoo's framework is unique. It allows Odoo and community developers to provide top-notch usability that scales across all apps.

Usability improvements made to Odoo are automatically applied to the entire suite of integrated apps.

Finally, with regular annual releases, Odoo evolves much faster than other solutions. When you put this all together, Odoo is positioned to disrupt the market with the broadest functionality comprising 30+ integrated apps with the best user experience at a significantly lower cost than the competition.

See below Odoo's positioning in the Business Applications Market



Our Solutions



Digital Commerce

Integrated eCommerce, digital marketing and sales with automation.



HR Employee Portal

Quick and easy access to HR-related transactions and services.



Wholesale Distribution

Specialised wholesale distribution industry solutions.



Services

Professional and field service management solutions.



Manufacturing

Flexible, integrated, and extensible manufacturing ERP software.



Workspace

Email, office, conferencing and cloud solutions.

Companies that trust us

analogic solutions



AP Scott Trinidad Limited
"Sell You Today.....Serve You For Life"

InterChem

CellMaster



Lange Trinidad Ltd.

Unipet

odoo

SAP Business One



NETSUITE

Microsoft Dynamics® AX



MRP Comparison White Paper:

Microsoft Dynamics AX, Netsuite, Odoo & SAP Business One

August 2016

Introduction

A manufacturer looking to upgrade their management software from a legacy system or implement an ERP software for the first time is faced with a multitude of choices. Each part of the manufacturing process is covered by its own software. For example, a manufacturer might run MRP software to plan production, MES to manage the shop floor, CMMS to manage maintenance, QMS for quality control, and WMS to track inventory. Most ERP systems on the market cover several of these functional areas, but few truly do everything out of the box. Most rely on third-party add-ons and integrations to provide complete coverage. This is particularly common for operations outside the core manufacturing workflow, such as maintenance, PLM, and quality management.

Choosing the Right Software

Whether you are outgrowing entry-level software or replacing a legacy system, choosing an ERP that is a good fit for your company can have a strong impact on your future growth and profitability. There is tremendous pressure to get an ERP implementation right the first time because the cost is so high. Implementation requires a great deal of time and input from employees across your organization, furthermore licensing and consulting fees can be significant.

Despite these high stakes, most decision makers selecting and implementing ERP software will not do so more than a few times in their career. The purchasing relationship is therefore tilted in favor of the vendor, with many vendors requiring hours of qualification before revealing crucial details such as features and pricing. When dealing with vendors, it is therefore essential to accurately and completely communicate the needs of your organization to avoid finding out 6 months into implementation that the project isn't feasible or that an unexpected and expensive custom development is required.

Cloud or On-Premises?

In recent years there has been a trend in business software towards a software as a service (SaaS) model. Most major business software vendors, ERP or otherwise, have begun offering their locally installed products in a cloud-hosted version to provide additional flexibility. When deploying a cloud-based software, there is no need for a local server or other network hardware, as data is managed and processed on a secure off-site server. Depending on the size of the deployment, this can significantly reduce the initial cost of a system. This can make a cloud solution a better choice for small and medium size businesses with less capital.

As data security concerns grow, many organizations must make the decision on how they would like to store their data. Due to the initial overhead and high maintenance costs of a secure locally hosted software solution, many businesses are now considering cloud-based SaaS providers as a low cost/high security option for their operational software needs.

Third-Party Integrations and Add-Ons

While most features missing from an ERP can be added through an add-on or third-party integration, doing so increases the cost and complexity of a solution. It requires a higher level of expertise during implementation and can create instability in performance and compatibility issues during upgrades. It is therefore advisable to select a software that covers all of your core business functions out of the box, only relying on add-ons when absolutely necessary.

For this reason, the trend among manufacturing software solutions has been to incorporate more and more features into the core package. Each software included in this document covers several of the most important functional aspects of a manufacturing business. Each new version of these software solutions, too, has seen the inclusion of new features which widen their functional breadth.

Automated Data Collection on the Shop Floor

An important benefit conferred by modern manufacturing software is a high level of control over the physical production process via automated data collection. Automated data collection has a number of advantages over traditional manual monitoring and time-tracking. It takes no additional labor to collect accurate data that is free of human error and provides an unparalleled granularity of insight into the production process. The opportunities for process improvement are profoundly valuable for workflow optimization, saving time and labor costs.

Software Compared in this Document

The four software solutions compared in this document were chosen because they represent a reasonable sample of the mid-market manufacturing solutions available today.

Comparing MRP Software Offers

Microsoft Dynamics AX

Microsoft Dynamics AX is the most feature-rich of the of five products in the Microsoft Dynamics ERP line. AX was originally released as a collaboration between IBM and Daamgard Data (as IBM Axatpa) in 1998 before being acquired by Microsoft in 2002 and re-branded under its current name.

“ MICROSOFT’S ERP SOLUTION ”

AX is designed for mid-to-enterprise size businesses operating across multiple locations, countries, or currencies. Dynamics AX has particular strengths in manufacturing and distribution. It is commonly deployed by companies with revenue greater than \$50 million annually, though smaller implementations are also possible. It is commonly used by discrete manufacturers, though it is also deployed by process manufacturers and in the retail industry. AX is offered both in the cloud and as an on-premises installation, sold exclusively by value-added resellers. For this comparison, we chose the latest release, AX 2012 R3, in the on-premises configuration.

19,000
companies

30
countries

12,000
usergroup
members

25
languages

NetSuite

NetSuite was founded in 1998 as NetLedger, a cloud-hosted accounting software. It has since grown into a full-spectrum suite of business software applications. True to its name, NetSuite is available exclusively through the cloud.

“ THE WORLD’S NUMBER ONE
CLOUD BUSINESS MANAGEMENT SUITE ”

NetSuite employs a modular structure, with each deployment comprised of a selection of its core modules or “apps”. NetSuite offers preconfigured “suites” of apps to match the needs of different market segments. Apps are also sold a la carte, ranging in price from \$199 to \$499 each. Some modules exist as basic and advanced versions. In our comparison, we used the more advanced modules when available.

30,000
customers

160
countries

312
apps in SuiteApp

4,500
employees

Odoo

Odoo is an open-source suite of business apps. It is built on a modular structure in which each app covers one business function and each app is installed as needed. Odoo is available to be installed on-premises as well as in the cloud. Odoo recently released a new version of its manufacturing app suite, adding quality, maintenance, PLM, and expanded MRP and MES functionality. In this document, we will compare the on-premises configuration of the latest release, version 10.

“ GROW YOUR BUSINESS ”

Support and implementation services for the on-premises edition are sold by Odoo certified partners, while support for the SaaS is provided by Odoo itself. The on-premises edition has thousands of community-developed modules which add or modify functions, allowing a high degree of flexibility. The SaaS only allows the installation of the three-dozen modules officially supported by Odoo Inc.

2+
million users

730
partners

120+
countries

1,300
developers

SAP Business One

SAP, born from the ashes of the Xerox business computing division, is the venerable purveyor of enterprise software, primarily selling built-to-suit solutions for large enterprises. In 2002, SAP made its first foray into the SME market segment with the purchase of what is now SAP Business One (SBO). SBO is the lowest cost ERP offering from SAP, designed to be deployed quickly and with minimal customization.

“ THE BEST RUN BUSINESSES RUN SAP ”

Business One is designed to cover every business software need of small to mid-sized businesses, from CRM to Manufacturing deployed either in the cloud or on-premises. SBO is best suited to light manufacturing as it lacks advanced planning and shop floor control features when deployed out-of-the-box. There is a large community of value-added resellers, many of which have developed their own modules to add the missing features needed for more complex manufacturing processes.

50,000

customers

190

countries

670

partners
worldwide

650,000

users

Features Comparison

Inventory Management	Odoo Enterprise V10	MS Dyn AX	SAP B1	NetSuite
General				
Multi-Warehouse	✓	✓	✓	✗ ¹
Storage Locations (Bins)	✓	✓	✓	✓
Bin Replenishment	✓	✓	✓	✓
Mobile Device Support	✓	✓	✓	✓
Multi-Company	✓	✓	✓	✓
Multi-Currency	✓	✓	✓	✓
Multi-Language	✓	✓	✓	✓
Automatic ASN (Advanced Shipping Notice)	✗	✓	✗	✓
Package Management / Cartoning	✓	✓	✓	✓
Freight Carrier Integration	✓	✓	✗	✓
Manage Consignee Stocks	✓	✗	✓	✓
EDI (Electronic Data Interchange)	✗ ²	✗ ³	✓	✗ ⁴
Products				
Non-Stocked Inventory ⁵	✓	✓	✗	✗
Multiple Variants	✓	✓	✗	✓
Multiple Units of Measure	✓	✓	✓	✓
Inter-class UoM Conversion ⁶	✓	✓	✓	✓
Variant Matrix	✗	✓	✗	✓

1 NetSuite supports multiple companies, but only one warehouse per company.

2-4 EDI is available through third-party software.

5 Physical products for which we don't manage the inventory level.

6 Conversion of base and secondary UoM (i.e. Volume to Mass). Sometimes called secondary units of measure.

Inventory Management	Odoo Enterprise V10	MS Dyn AX	SAP B1	NetSuite
Traceability				
Lots / Serial Numbers	✓	✓	✓	✓
Up / Down Traceability	✓	✓	✗	✓
360° Traceability ¹	✓	✓	✗	✓
Expiration Dates	✓	✓	✓	✓
Cycle Counting	✓	✓	✓	✓
Reporting				
Inventory Forecasts	✓	✓	✓	✓
Inventory Valuations	✓	✓	✓	✓
ABC Analysis	✗	✓	✗	✓
Barcode Support				
QR Code Support	✗ ²	✓	✗	✗
RFID Support	✗ ³	✓	✗ ⁴	✗ ⁵
Lots / Serial Numbers	✓	✓	✗ ⁶	✓
Receptions	✓	✓	✗ ⁷	✓
Picking	✓	✓	✗ ⁸	✓
Internal Moves	✓	✓	✗ ⁹	✓
Delivery Orders	✓	✓	✗ ¹⁰	✓
Inventory Adjustments	✓	✓	✗ ¹¹	✓
Routing				
FIFO / LIFO	✓	✓	✓	✓
Customizable Routes ¹²	✓	✗	✗	✓
Putaway Strategies	✓	✓	✗	✓
Wave Picking	✓	✓	✗	✓
Batch Picking	✗	✓	✓	✓
Zone Picking	✓	✓	✗	✓
Cluster Picking	✓	✓	✗	✓
Cross-Docking	✓	✓	✗	✗
Putaway Location By Size, Weight, & Capacity	✗	✓	✗	✓

1 Tracking product lots/serials from production to sales order to delivery order.

2 Odoo can read QR codes, but third-party software is required to print them.

3-5 Available through third-party add-ons.

6-11 SBO can accept barcodes as input in any field, but there is no barcode scanning interface.

12 Sometimes called push/pull rules.

Supply Chain	Odoo Enterprise V10	MS Dyn AX	SAP B1	NetSuite
Features				
Vendor Data Management	✓	✓	✓	✓
Vendor Pricelist Management	✓	✓	✗	✓
Inbound Quality Control	✓	✓	✗	✗
Dropshipping	✓	✓	✓	✓
Purchases				
Purchase Requests	✓	✓	✓	✓
Purchase Orders	✓	✓	✓	✓
Purchase Approval Workflow	✓	✓	✓	✓
Request for Quotations	✓	✓	✓	✓
Contracts / Purchase Agreements	✗	✓	✗	✓
Automated Procurements				
Minimum Stock Rules ¹	✓	✓	✓	✓
Make-to-Order	✓	✓	✓	✓
Master Production Schedule	✓	✓	✗ ²	✓

1 Sometimes called order points.

2 MRP Wizard may be used to automate procurement.

Manufacturing	Odoo Enterprise V10	MS Dyn AX	SAP B1	NetSuite
Master Data				
Multi-Level BoM	✓	✓	✓	✓
Byproducts / Coproducts	✓	✓	✗	✗
Routings	✓	✓	✗	✓
Subassemblies	✓	✓	✓	✓
One BoM for Multiple Product Variants	✓	✗	✗	✗
BoM versions	✓	✓	✓	✓
Multiple BoM / Routing ¹	✓	✓	✓	✓
Planning				
Demand Forecasting	✓	✓	✓	✓
MRP I Scheduler	✓	✓	✓	✓
MRP II Scheduler ²	✓	✓	✗	✓
Master Production Schedule	✓	✓	✗ ³	✓
Gantt Chart Scheduling w/ Drag & Drop	✓	✓	✓	✗
Kanban Planning	✓	✓	✗	✗
Production Calendar	✓	✗	✗	✓
Infinite Capacity Scheduling	✓	✓	✓	✓
Finite Capacity Scheduling	✓	✓	✗	✓
Available to Promise	✗	✓	✓	✓
Multiple Scheduling Plans	✗	✓	✓	✓
Delivery Date Calculation (Backwards Scheduling)	✓	✓	✗	✗
Production Order Splitting/ Merging	✗	✓	✗	✗
Operations				
Manufacturing / Production Orders	✓	✓	✓	✓
Job Tracking	✓	✓	✓	✓
Work Orders / Operations	✓	✓	✗	✓
Automated Time Tracking	✓	✓	✗	✓
Disassembly Orders	✓	✓	✓	✗
Subcontract Manufacturing	✓	✓	✓	✓
Rework / Repair	✓	✓	✗	✗
Scrap	✓	✓	✓ ⁴	✓
Disposal Strategies	✓	✓	✗	✗
Kits	✓	✓	✓	✓
Edit Individual Production BoMs	✗	✓	✓	✗

1 Ability to create multiple BoMs or routings for a single product.

2 Ability to schedule work orders based on workcenter capacity and availability.

3 MRP Wizard performs a similar function.

4 Constant Scrap Only.

Manufacturing	Odoo Enterprise V10	MS Dyn AX	SAP B1	NetSuite
Costing				
Perpetual Inventory Valuation ¹	✓	✓	✓	✓
Periodic Inventory Valuation ²	✓	✓	✓	✗
Standard Price	✓	✓	✓	✓
FIFO	✓	✓	✓	✗
Landed Costs	✓	✗ ³	✓	✓
Actual Production Labor	✓	✗	✗	✓
Production Order Costing	✓	✓	✓ ⁴	✓
Shop Floor Control				
Shop Floor Terminals	✓	✓	✗ ⁵	✗
Production Activities	✓	✓	✓	✓
Non-Production Activities ⁶	✓	✓	✗ ⁷	✗
Time Tracking	✓	✓	✗	✓
Messages on Work Orders	✓	✓	✗	✗
Barcode Support	✓	✓	✗	✓
Equipment / Machine Management	✓	✗	✗	✗
Work Instructions on Work Orders	✓	✗	✗	✗
Maintenance Requests from Shop Floor Terminal	✓	✗	✗	✗
Human Resources				
Schedule Management	✓	✓	✗	✓
Touchscreen Attendance	✓	✗	✗	✗
Timesheets	✓	✓	✗	✓
Breaks	✓	✓	✗	✗
Overtime	✓	✗	✗	✗
Vacation / Injury	✓	✓	✗	✗
Reporting and Forecasting				
Overall Equipment Efficiency	✓	✗	✗	✗
Work Time	✓	✓	✓	✓
Demand Forecast	✓	✓	✓	✓
Maintenance KPIs	✓	✗	✗	✗
Production Costs Analysis	✓	✓	✓	✓
Up/Downstream Traceability	✓	✓	✓	✓
Analytic Accounting	✓	✗	✓	✓
CSV Export	✓	✗ ⁸	✓	✓
Dynamic Pivot Tables	✓	✗	✗ ⁹	✗
Dashboards	✓	✓	✓	✓
Save Custom Reports	✓	✓	✓	✓

1-2 Inventory moves affect stock levels only.

3 As a “miscellaneous” charge on the purchase order.

4 Planned labor included as line item on the BoM.

5 No special interface exists for shop floor use. Workers could view production orders from a standard SAP interface on the shop floor.

6 Tasks like cleanup or setup which do not directly contribute to production.

7 Could be configured as production orders.

8 Conversion from ASCII or HTML and manual manipulation required.

9 Using MS Excel Connector.

Maintenance	Odoo Enterprise V10	MS Dyn AX	SAP B1	NetSuite
Scheduling and Request Handling				
Schedule Preventive Maintenance	✓	✗	✗	✗
Maintenance Kanban	✓	✗	✗	✗
Maintenance Calendar	✓	✗	✗	✗
Shop Floor Integration	✓	✗	✗	✗
Multiple Teams / Sites	✓	✗	✗	✗
Asset Management	✓	✗	✗	✗
Subcontract Repair	✓	✗	✗	✗
Job Tracking	✓	✓	✗	✗
Parts Management				
Inventory Management	✓	✓	✓	✓
Purchasing Integration	✓	✓	✓	✓
Rotating Asset Location	✓	✗	✗	✗
Equipment Serial Numbers	✓	✗	✗	✗
Equipment Maintenance History	✓	✗	✗	✗
Dealer Portal	✓	✗	✗	✗

QMS	Odoo Enterprise V10	MS Dyn AX	SAP B1	NetSuite
Quality Control				
At Reception	✓	✓	✗	✗
In-Process	✓	✓	✗	✗
Before Delivery	✓	✓	✗	✗
Inventory Quarentine	✓ ¹	✓	✗	✗
Quality Checks				
Quality Control Plan	✓	✓	✗	✗
Pass/Fail Checks	✓	✓	✗	✗
Measurement Checks	✓	✓	✗	✗
Quality Alerts / Nonconformance Documents	✓	✓	✗	✗
Print Nonconformance Documents	✗	✓	✗	✗
Corrective Actions	✓	✓	✗	✗
ISO9001 Tools				
Documentation Management	✓	✓	✗	✗
Customer Satisfaction Surveys	✓	✗	✗	✗
Customer Complaints Management	✓	✓	✗	✗
Traceability of Operations	✓	✓	✗	✗
Resources Management	✓	✓	✗	✗
Reports				
Nonconformance Costs	✗ ²	✓	✗	✗

1 Requires using a custom routing.

2 Mostly included as part of the OEE report.

Product Lifecycle Management	Odoo Enterprise V10	MS Dyn AX	SAP B1	NetSuite
Features				
Engineering Change Orders (ECOs)	✓	✓	✗	✓
BoM Version Management	✓	✓	✗	✓
Routing Version Management	✓	✓	✗	✓
MRP Integration	✓	✓	✗	✓
Centralized BoM Management	✓	✓	✗	✓
ECO Management				
Approval Workflows	✓	✓	✗	✓
BoM Version Difference Viewer	✓	✗	✗	✓
Bulk BoM Updates	✓	✗	✓	✓
Notification Mechanism	✓	✓	✗	✗
Project eMail Gateway	✓	✓	✗	✗
ECO Costing	✗	✗	✗	✓
Third-Party CAD Integrations				
AutoCAD	✗	✗	✗	✗
SolidWorks	✗	✗	✗	✗
Autodesk	✗	✗	✗	✓

Notes on Usability

Usability, especially in enterprise software, is an often-overlooked but critically important aspect to consider during the purchasing process. Usability affects the efficiency of users working within the system, the ease with which the software can be implemented, and can reduce the costs associated with user errors. Additionally, users who spend most of their working day using the system will appreciate software that is easy to use. This is especially true for shop floor control systems, as workers there may be in a loud environment, moving quickly, wearing PPE, or otherwise not optimally situated to use a traditional computer interface with a keyboard and mouse. The special design considerations of a shop space or production line must be taken into consideration for any interface used there.

We have selected screenshots of analogous menus within each software to demonstrate the visual elements and interface options for each software in this comparison. While it is difficult to assess software usability with a static image, a rough comparison can be made. This additional information can only aid your analysis.

Dashboard - Microsoft Dynamics AX



List of Vendors - Microsoft Dynamics AX

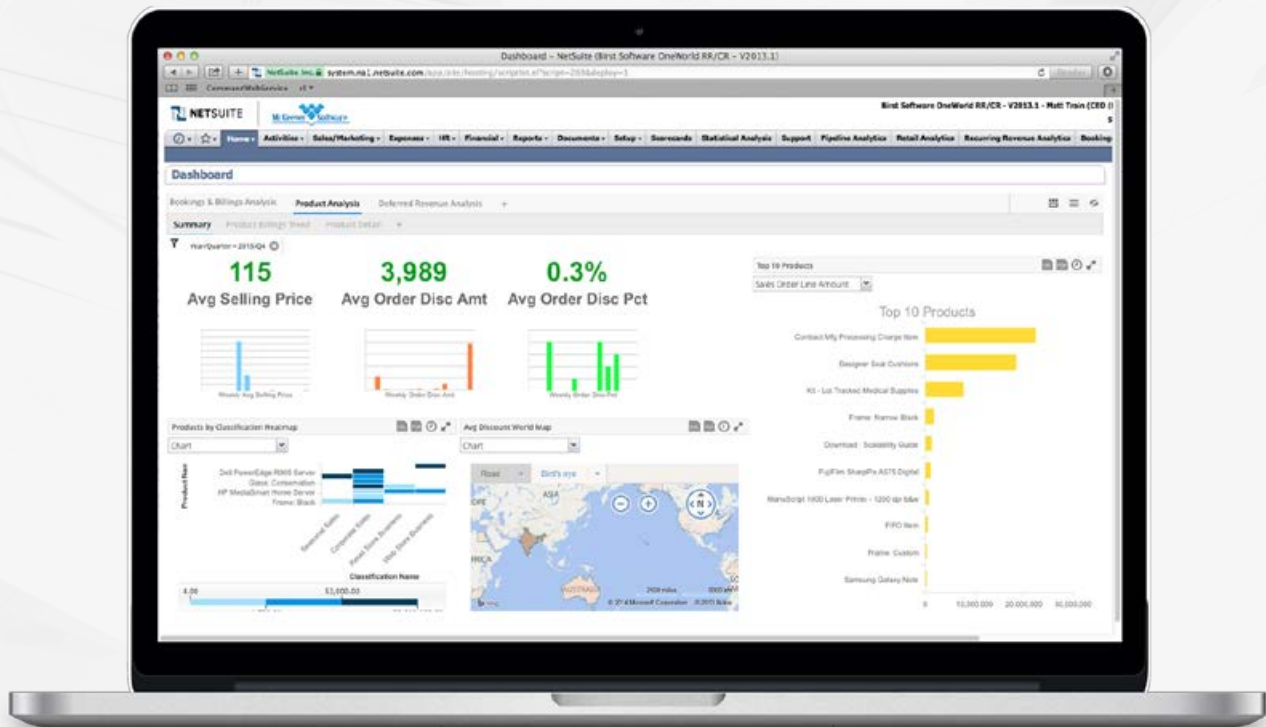
The screenshot shows the 'List of Vendors' window in Microsoft Dynamics AX. The window displays a list of vendors with columns for Vendor account, Name, Vendor hold, Phone, and Extension. The 'Vendor account' column is highlighted in blue.

Vendor account	Name	Vendor hold	Phone	Extension
3001	A. Dahan Corporation	No	907-655-0116	
3106	A. Dahan Electronics	No		
3001	Adventure Services	No		
3107	Apex Electronics	No		
3005	Apex Hi House	No	907-655-0136	
9000	Apex Design	No	905-625-5505	505
4103	Bentley Electronics	No		
3113	Star Vendor People	No		
3002	Bright Yellow Services	No		
4102	Butterfly Flats	No	441-655-0126	
7001	California State Tax Authority	No	311-655-0177	
900101	Canyas Wholesale	No	311-655-0116	
9007	Cheryl Sanger	Never		
3004	City Power & Light	No	907-655-0136	
3100	Calix Hardware Wholesale	No		
3002	Calix Recorders	No	224-655-0124	
7008	Colorado State Tax Authority	No	311-655-0122	
9000	Carson Asia	No	224-655-0134	

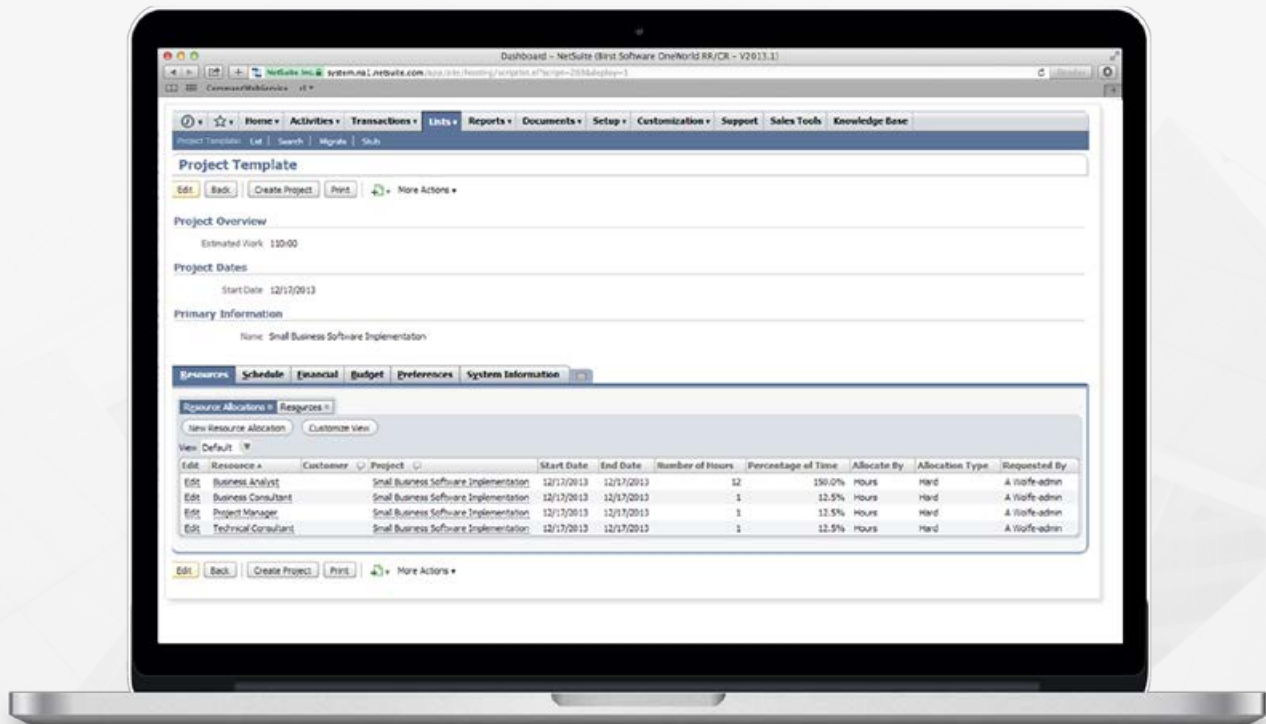
Below the list, the details for the selected vendor (3001: A. Dahan Corporation) are displayed:

- Vendor account:** 3001
- Vendor name:** A. Dahan Corporation
- Vendor type:** 10
- Vendor price tolerance group:** 9000
- Terms of payment:** 12/12/2000
- Modified date and time:** 05/09/01 pm
- Modified by:** Admin

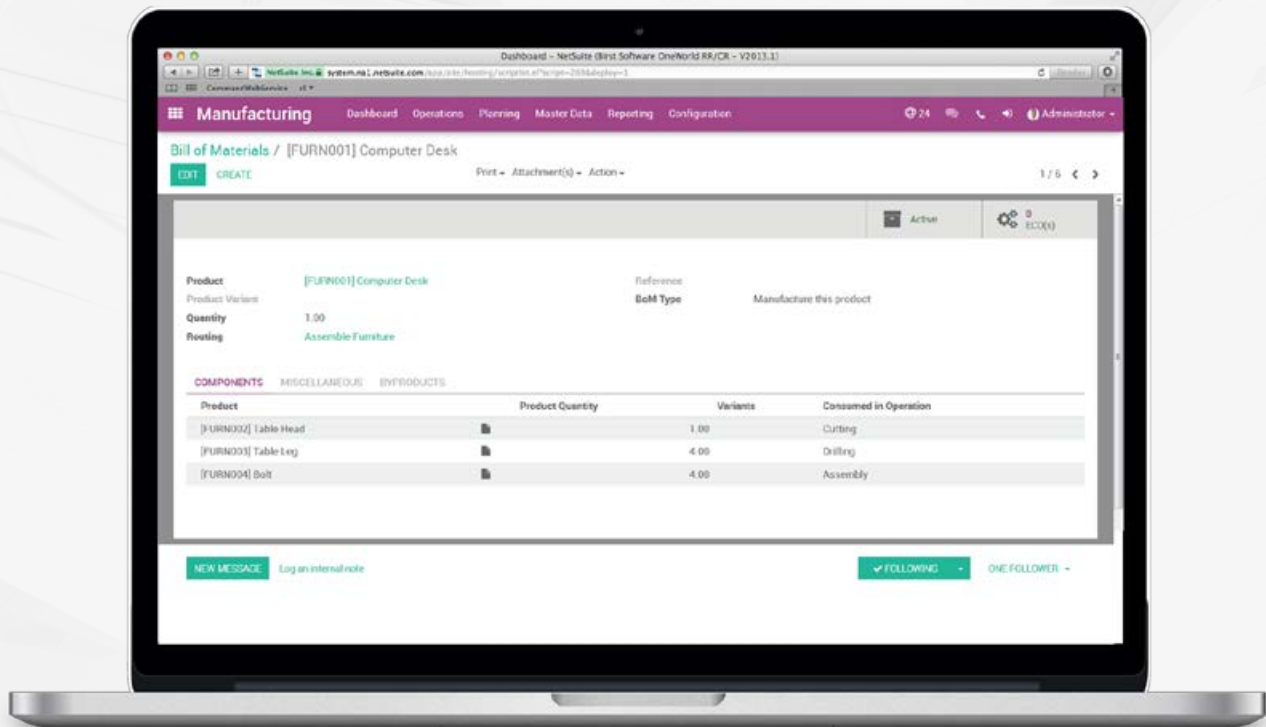
Dashboard - NetSuite



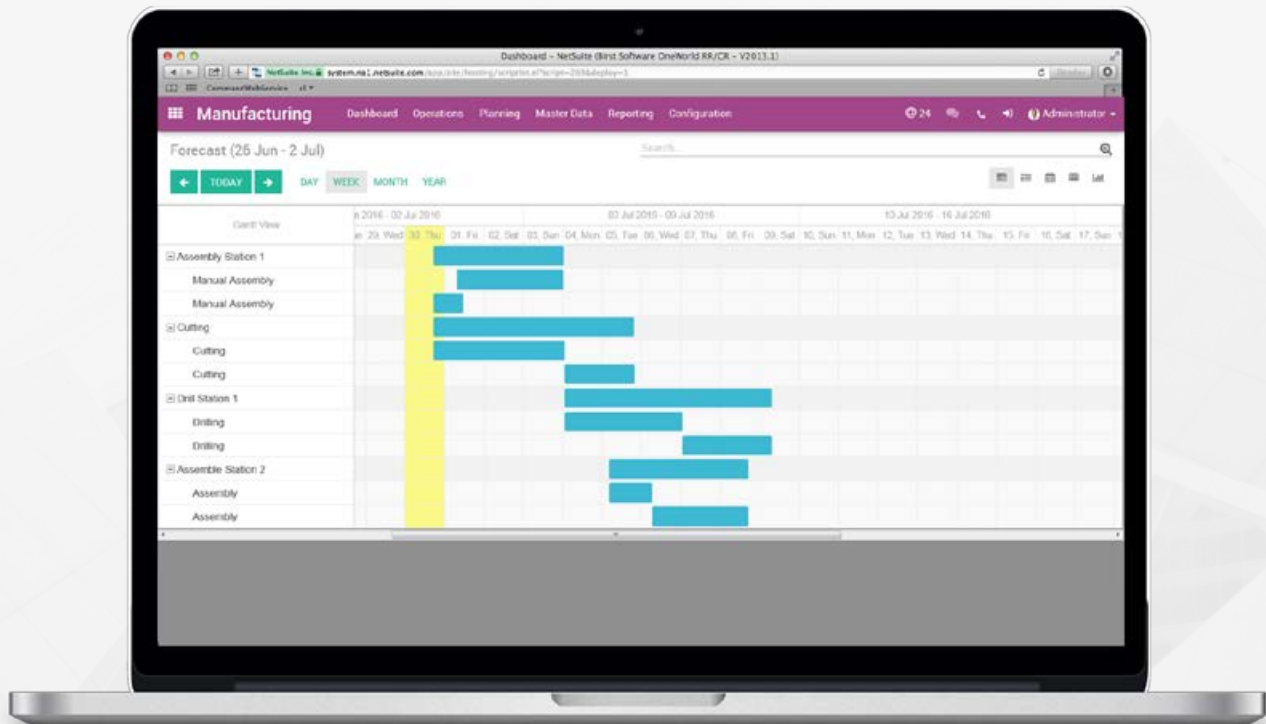
Project Planning - Netsuite



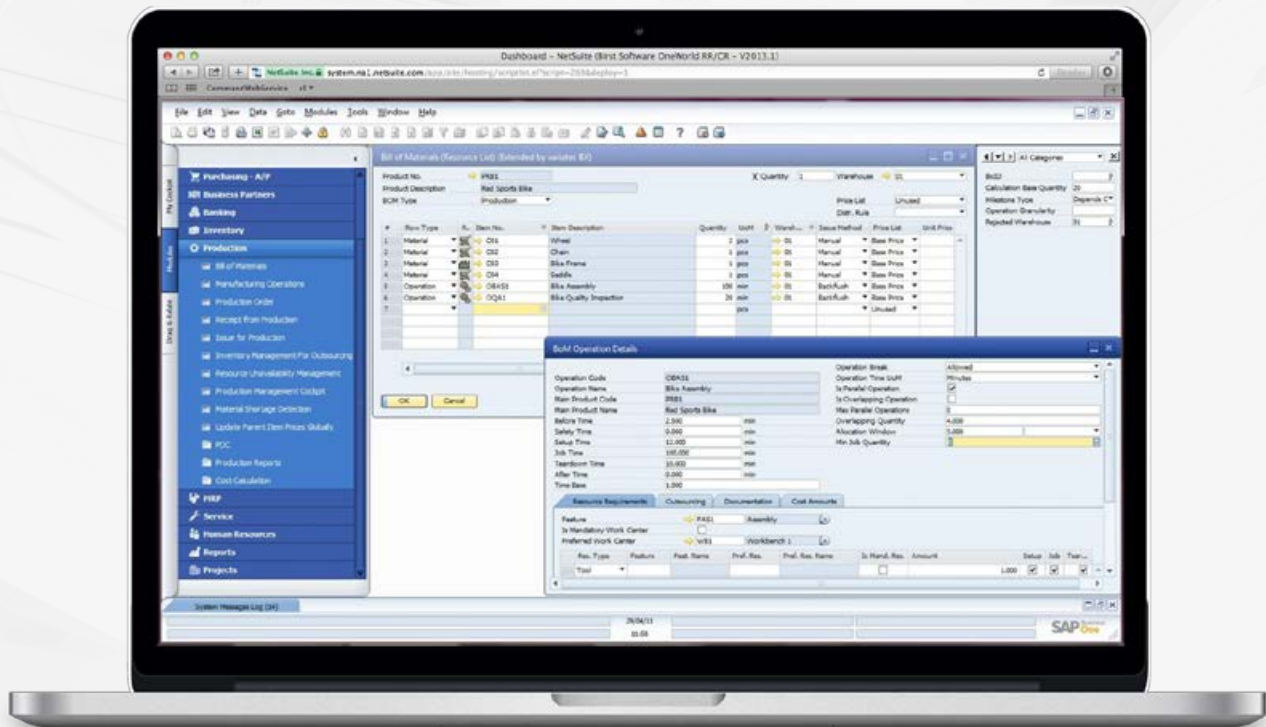
BoM - Odoo



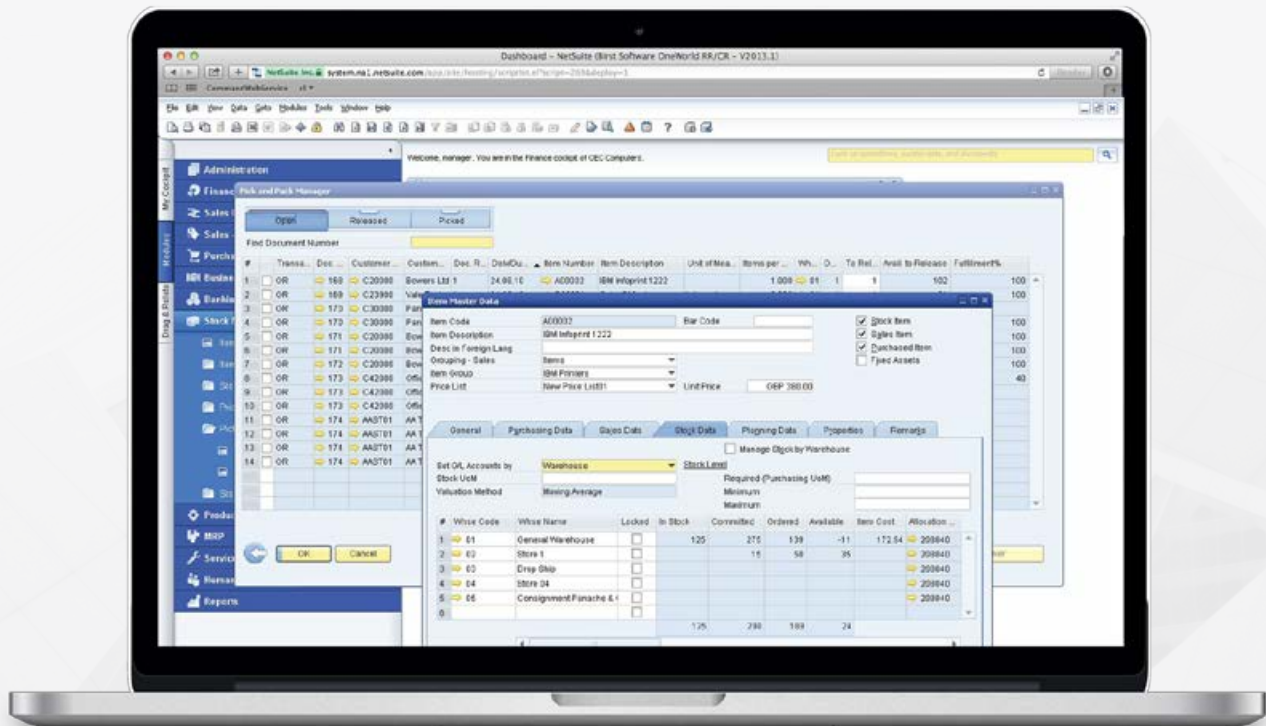
Production Scheduling - Odoo



BoM - SAP Business One



Product Master Data - SAP Business One



Usability	Odoo Enterprise V10	MS Dyn AX	SAP B1	NetSuite
UI				
Full Web Interface	✓	✗ ¹	✗ ²	✓
Responsive Mobile UI	✓	✗	✓	✓
Android Native App	✓	✗	✓	✓
iOS Native App	✗	✗	✓	✓
Market Place				
App Store / Add-ons	✓	✗ ³	✗ ⁴	✓
Subjective Ratings				
Ease of Use	★★★★★	★★★★☆	★★★☆☆	★★★★☆
Navigation and Search	★★★★★	★★★★☆	★★★★☆	★★★★☆
Data Entry	★★★★★	★★★★☆	★★★★☆	★★★★☆
Mobile App	★★★★☆	★★★☆☆	★★☆☆☆	★★★☆☆
Reports Flexibility	★★★★☆	★★★☆☆	★★★★★	★★★☆☆

User Satisfaction	Odoo Enterprise V10	MS Dyn AX	SAP B1	NetSuite
Ratings on g2Crowd	4.4/5	4.1/5	3.8/5	3.5/5
Ratings on GetApp	5/5	5/5 ¹	n/a	4.1/5
Ratings on Capterra	5/5	4.5/5 ²	n/a	4.5/5
Brand Exposure	★★★☆☆	★★★★☆	★★★★★	★★★★☆

1-2 Partial web portal.

3-4 Add-ons available through value-added resellers.

5 Based on one review.

6 Average of entire MS Dynamics product line.

Pricing & Conditions

Pricing & Conditions	Odoo Enterprise V10	MS Dyn AX	SAP B1	NetSuite
Pricing¹	\$25 / user / month	\$2,000 - \$6,000 / user	\$2,975 / user perpetual + 18% per year	\$4,499 / month + \$99 / user / month ²
Contract Duration	Monthly / Annual	Perpetual	Annual	Negotiable
Five Year Cost (50 Users)	\$75,000	\$100,000-\$300,000	\$282,625	\$566,940 ³
Free Trial	✓ ⁴	✗	✗ ⁵	✗ ⁶
New Version Upgrades Included	✓	✓	✓	✓
Update Service Included	✗	✗	✗	✓
Cloud Offer Available	✓	✓	✓	✓

1 Licensing costs only. Support, customization, and hardware not included.

2 For “manufacturing suite, 11-1,000 users”. Includes hardware and upgrades.

3 Cost of hardware is included in SaaS price.

4 Via Odoo Online free trial.

5-6 Some VARs provide free trial cloud servers.

Conclusions

Many factors must be considered when choosing a manufacturing software such as the complexity of the production workflow, the degree to which demand fluctuates, the lead times of production and procurement, the size of the organization, the growth rate of the business, the stock-keeping needs, or the complexity of the support operations in a plant. The list, as they say, goes on. You must make the decision based on your own superlative knowledge of your business while working closely with whichever vendor you choose.

This document was prepared by Odoo Inc. We made every effort to provide an objective analysis. If you feel that we have made a mistake or omitted important information, please contact feedback@mail.odoo.com and we will make the necessary corrections.

Our Solutions



Digital Commerce

Integrated eCommerce, digital marketing and sales with automation.



HR Employee Portal

Quick and easy access to HR-related transactions and services.



Wholesale Distribution

Specialised wholesale distribution industry solutions.



Services

Professional and field service management solutions.



Manufacturing

Flexible, integrated, and extensible manufacturing ERP software.



Workspace

Email, office, conferencing and cloud solutions.

Contact information



Digital Business Platform
Digital Training Academy

Lorcan Camps
lorcan@niodigital.co
(868) 680 - 7579

Location:
Port of Spain
Trinidad & Tobago

www.niodigital.co

Facebook • LinkedIn • Twitter • Instagram